

Internet SSO made easy

JOSSO

Open source Internet SSO solution for rapid and standards-based Internet-scale Single Sign-On implementations, allowing secure Internet access to the Web-based applications or services of customers, suppliers, and business partners.

KEY BENEFITS:

- Seamless Interoperability with both internal and cloud-based applications
- Short learning curve and decreased maintenance costs through our unique Model Driven Identity Approach
- Leverage existing computing infrastructure by bringing on board your business applications and third-party software
- Meet security and compliance requirements and reduce management complexity across diverse environments by using 2-Factor Authentication
- Guaranteed interoperability with third-party products and the freedom to switch to an alternative product as long as is standard compliant.
- Professionally Supported
Enterprise Edition targeted for enterprise use.
- Low Total Cost of Ownership (TCO)

SAML Support

Can realize both Identity Provider (Inbound) and Service Provider (Outbound) operational roles with SAML 1 and SAML 2.

Enable Secure Internet access from and to the Web-based applications or services of customers, suppliers, and business partners.

Rich User Experience

Our RIA (Rich Internet Application) Atricare Console enables a fully visual setup and administration experience of the Federated SSO setting.

Get on board with Internet-scale Single Sign-On with simplified identity and access management

Cross-platform

JOSSO can run under JBoss, Oracle Weblogic, Websphere, Apache Tomcat and Windows IIS platforms among others.

Leverage existing computing infrastructure - No need to have yet another dedicated application server component to deploy and

Transparent

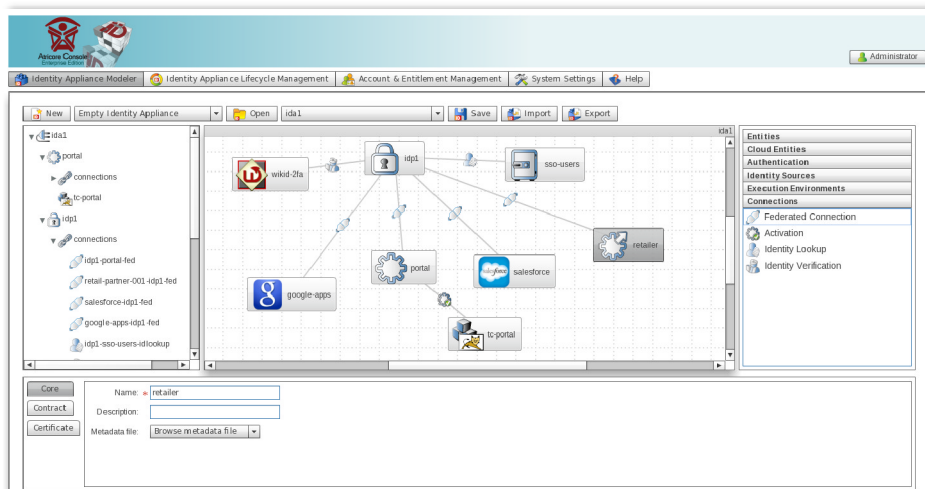
Our agent technology allows out-of-the-box SSO-enablement for JavaEE, Spring, Windows .Net, PHP, Ruby, Python, Perl applications among others.

Rapidly SSO-enable applications based on disparate platforms.

Professionally Supported

Enterprise Edition (EE) availability, a supported version targeted for enterprise use.

Provides you with a subscription to an enterprise-tested and refined version of the product with long-term support.



Main Product Features

Standards-based

Federation	Supports SAML version 1 and 2 realizing Identity Provider and Service Provider operational roles. Enables bringing on board SaaS services such as Google Apps and Salesforce.
Provisioning	Supports SPML (Service Provisioning Markup Language) and LDAP.
Authentication	Supports 2-Factor Authentication (2FA), Integrated Windows Authentication based on SPNEGO and Kerberos, Simple and Strong Authentication based on client certificates.
SOA Security	Supports WS-Trust and WS-Security.

Cross-platform

Operating Systems	Runs on Windows and all Unix flavors.
Java	Plays nice with JavaEE, JavaSE, Spring and OSGi settings.
Application Platforms	Enables transparent SSO support in JBoss, Tomcat, Oracle, Weblogic, Websphere, Apache Web Server, JBoss Portal, Pentaho, Alfresco, Liferay Portal, GateIn Portal, OpenCMS, Wavemaker among others.
Visual Console	Rich Internet Application (RIA) compatible with mainstream web browsers such as Internet Explorer, Firefox and Google Chrome.

Simple

Internet SSO Setting Modeler	Bundled with Atricare Console product, enabling a model-driven approach for specifying the Internet Single Sign-On setting in a purely visual fashion.
Visual Account and Entitlement Management	Allows to manage the full lifecycle of user accounts and their entitlements.
Visual Deployment Management	Enables system administrators to manage the execution lifecycle of Internet SSO deployments using a visual approach.
Works out-of-the-box	All-In-One identity solution that installs in minutes.

For more information, please visit: www.atricore.com



Phone: +1 (646) 863-9507 | Fax: +1 (866) 549-7601